

Ercan Özcan

Sen ve Ben 1

Fibel für den Erstsprachenunterricht Türkisch, 1. Klasse VS

Çalışma Defteri

Mit Illustrationen von Levent Tarhan

1. Auflage 2022

SBNr. 155456

ISBN 978-3-85253-725-2

Erklärung der im Buch verwendeten Symbole:



Schreibübung



Leseübung



Silbenübung



Lautschulung

Mit Bescheid des Bundesministeriums für Bildung, Wissenschaft und Forschung mit Geschäftszahl 2021-0.406.217 vom 10. Jänner 2022 als für den Unterrichtsgebrauch für die 1. Schulstufe an Volksschulen im Unterrichtsgegenstand Muttersprachlicher Unterricht Türkisch geeignet erklärt.

© 2022 E. Weber Verlag GmbH, A - 7000 Eisenstadt, www.eweber.at

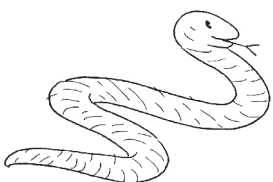
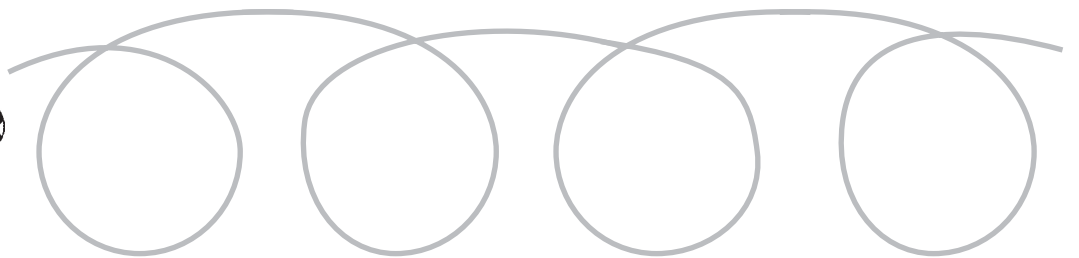
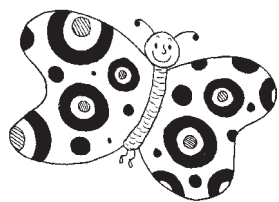
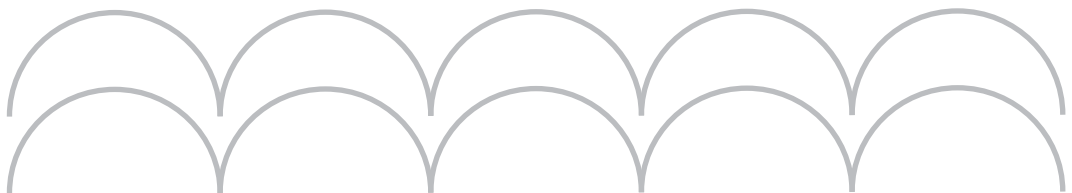
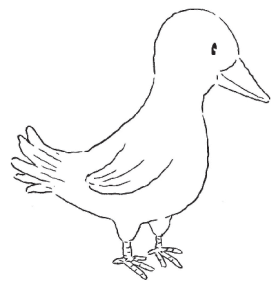
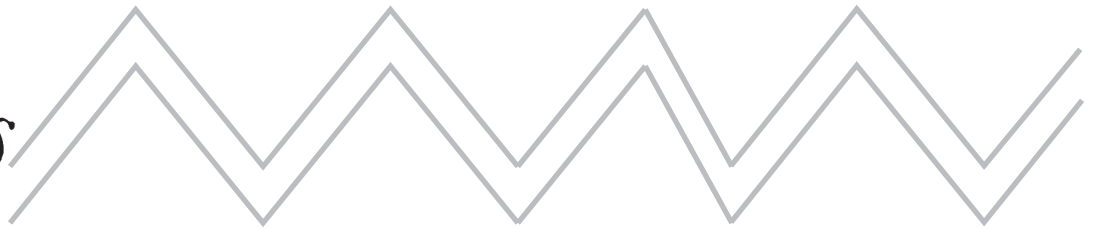
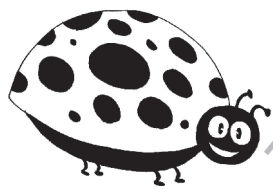
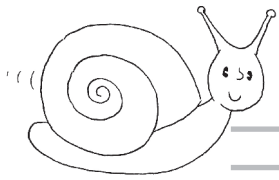
Layout & Umschlag: Mag. Walter Weber

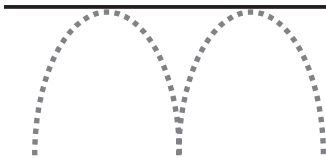
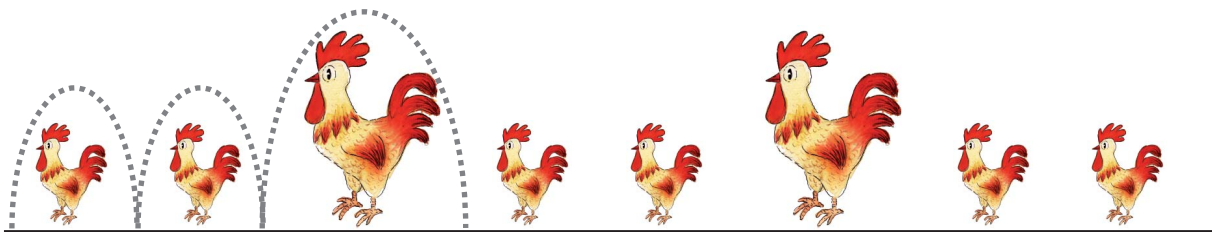
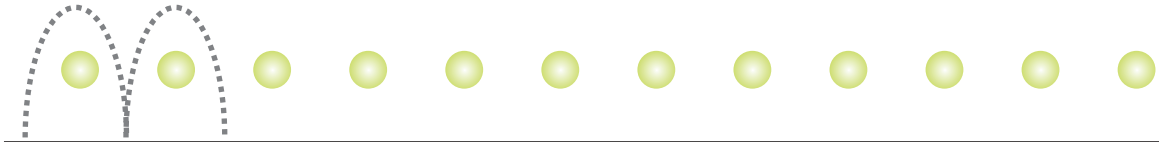
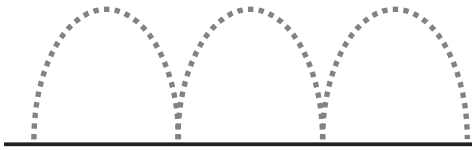
Dieses Buch wurde in der Schriftart "Ortnergasse" gesetzt, die mit freundlicher Genehmigung durch Werner Mayer verwendet wird.

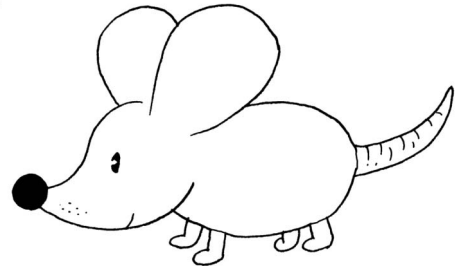
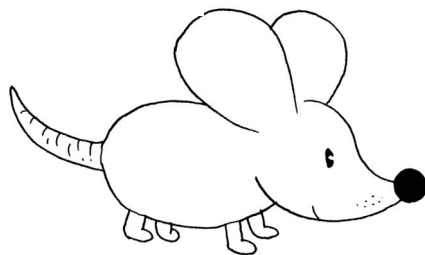
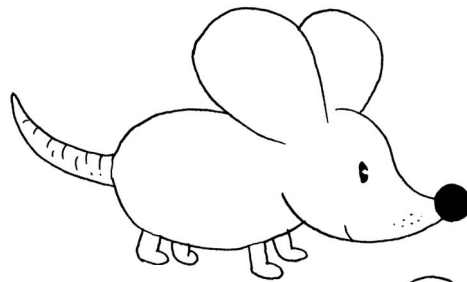
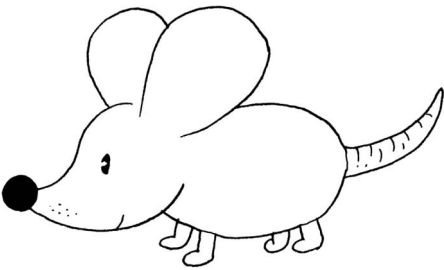
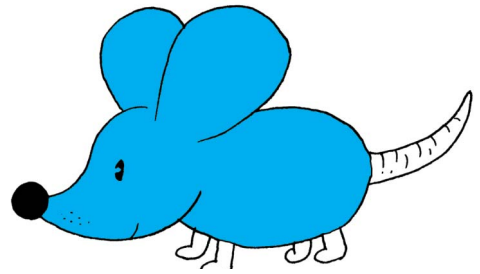
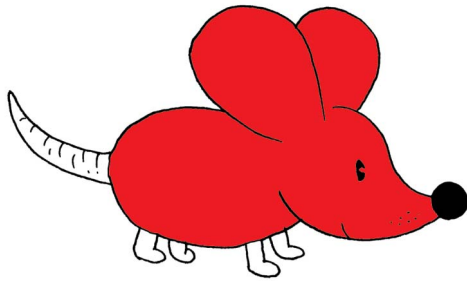
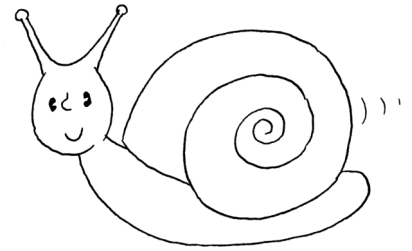
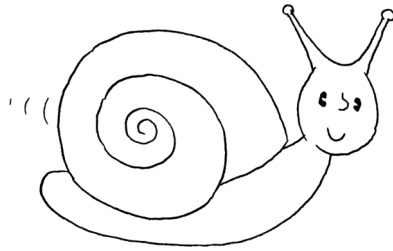
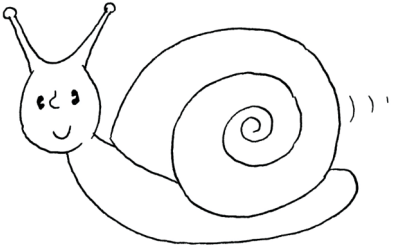
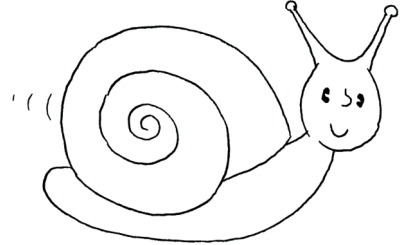
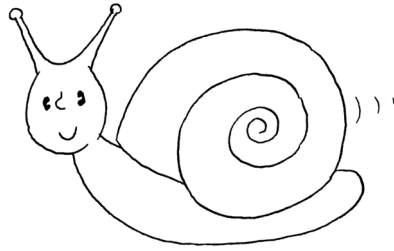
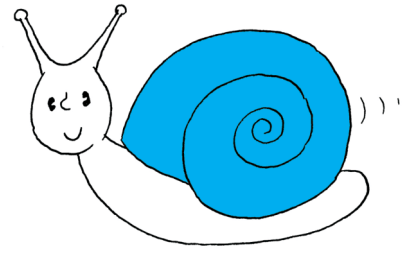
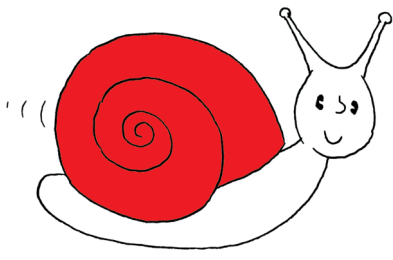
Alle Rechte vorbehalten: Nachdruck sowie auszugsweise Vervielfältigung, Übertragung auf Ton-, Bild- und Datenträger nur mit Genehmigung des Verlages.

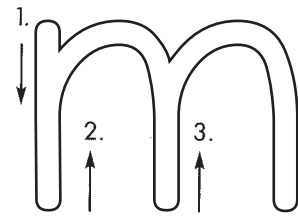
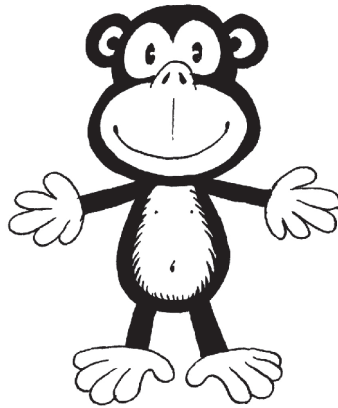
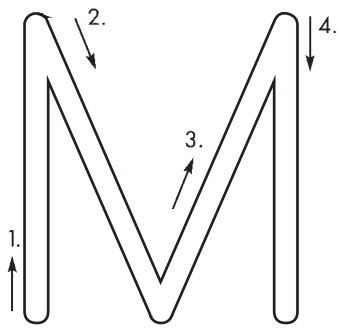
Bu benim:

Benim adım





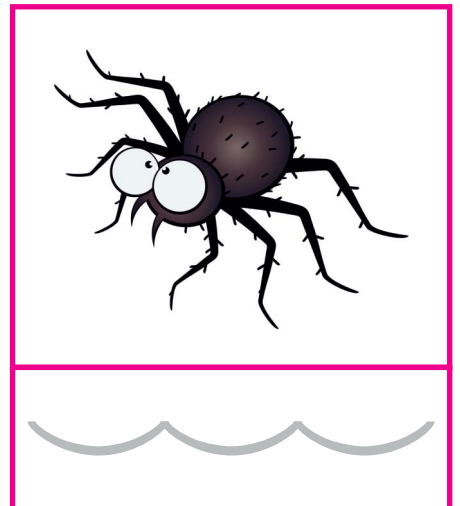
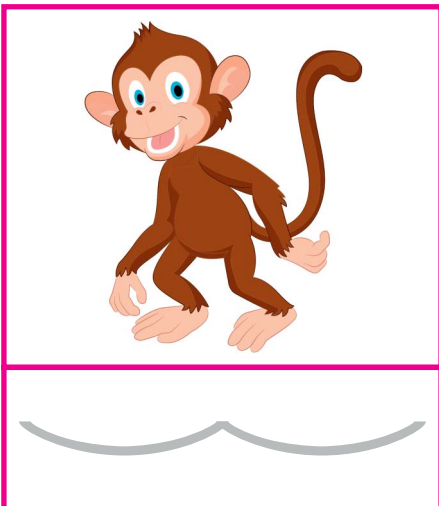




M M M M

m m m m

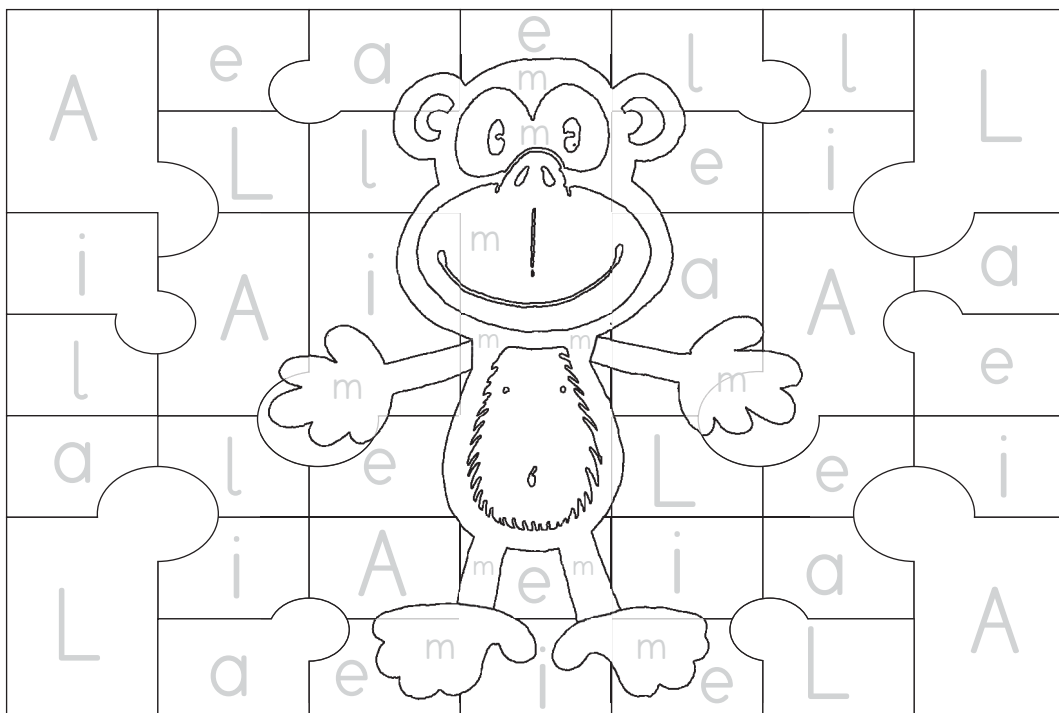
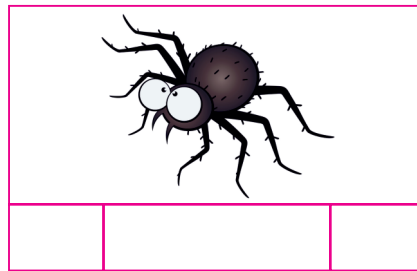
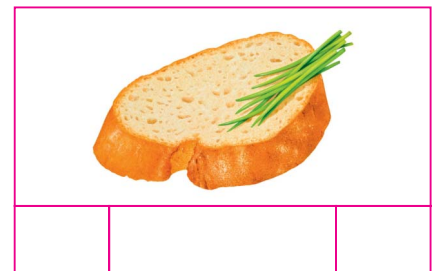
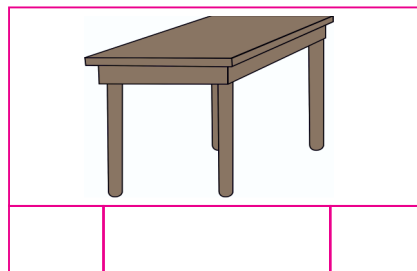
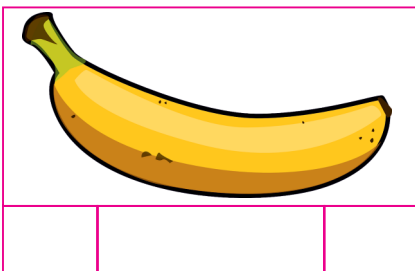
M m

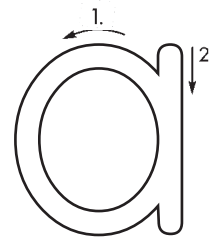
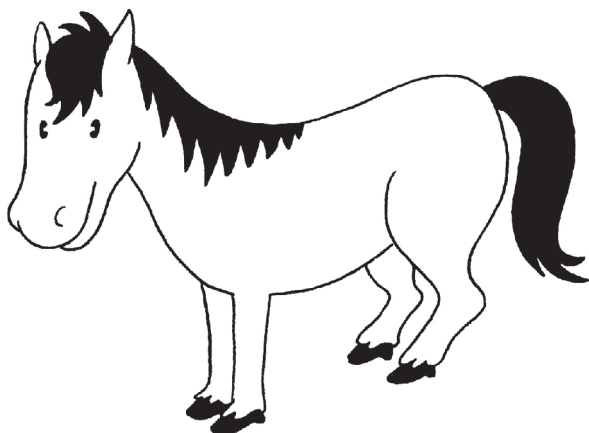
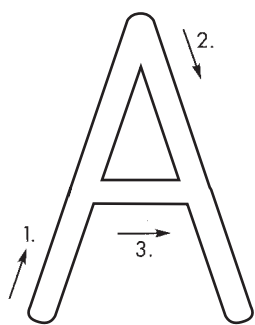




M m

l	m	F	i	M	n	L
M	J	F	m	l	M	N
m	l	M	U	I	N	m
n	m	B	M	L	m	E

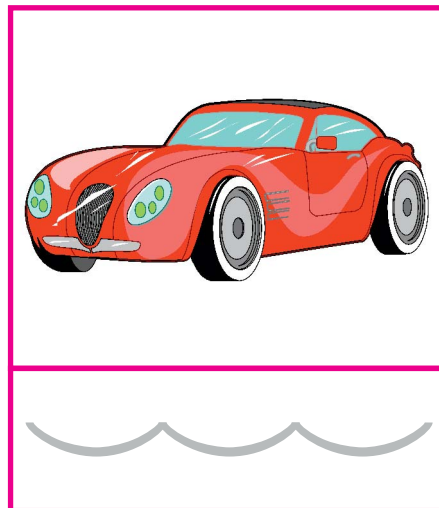
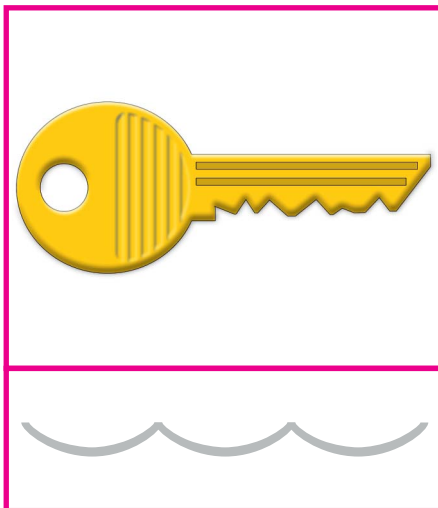
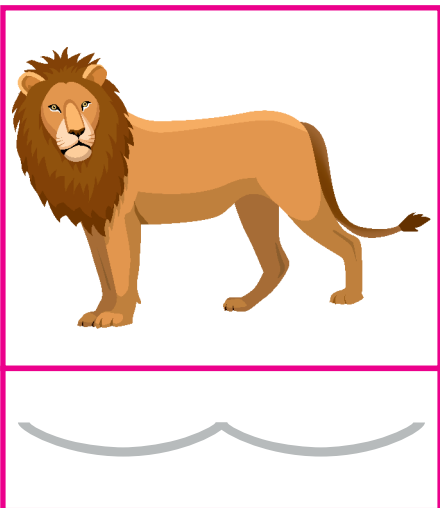




A a A a A a

ama *

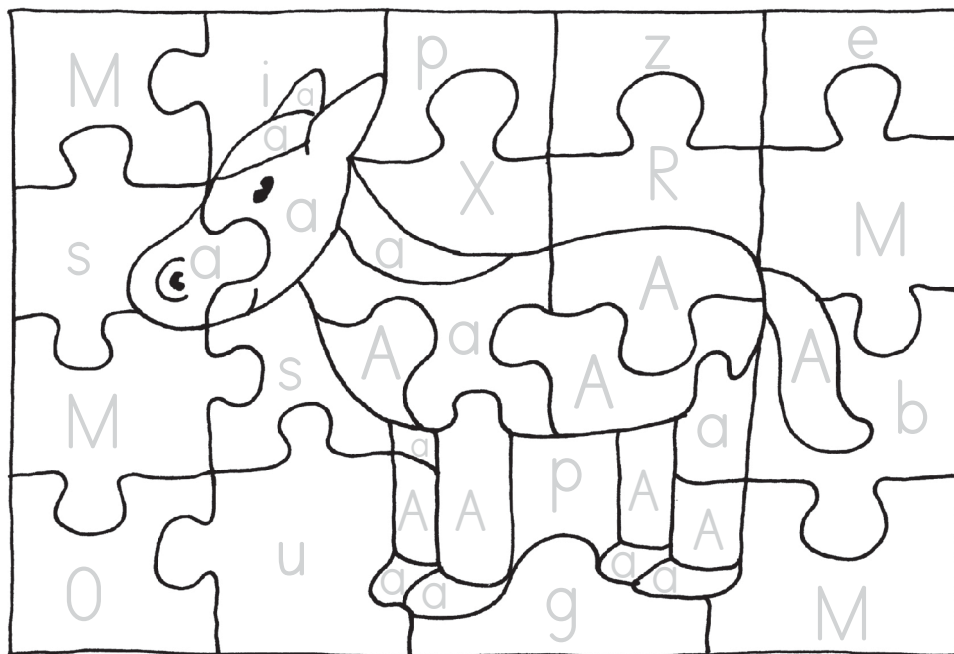
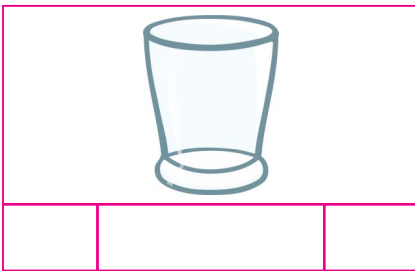
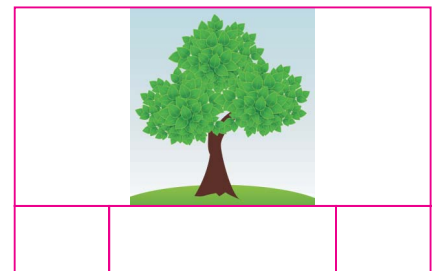
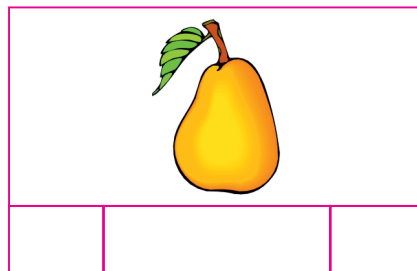
mama *

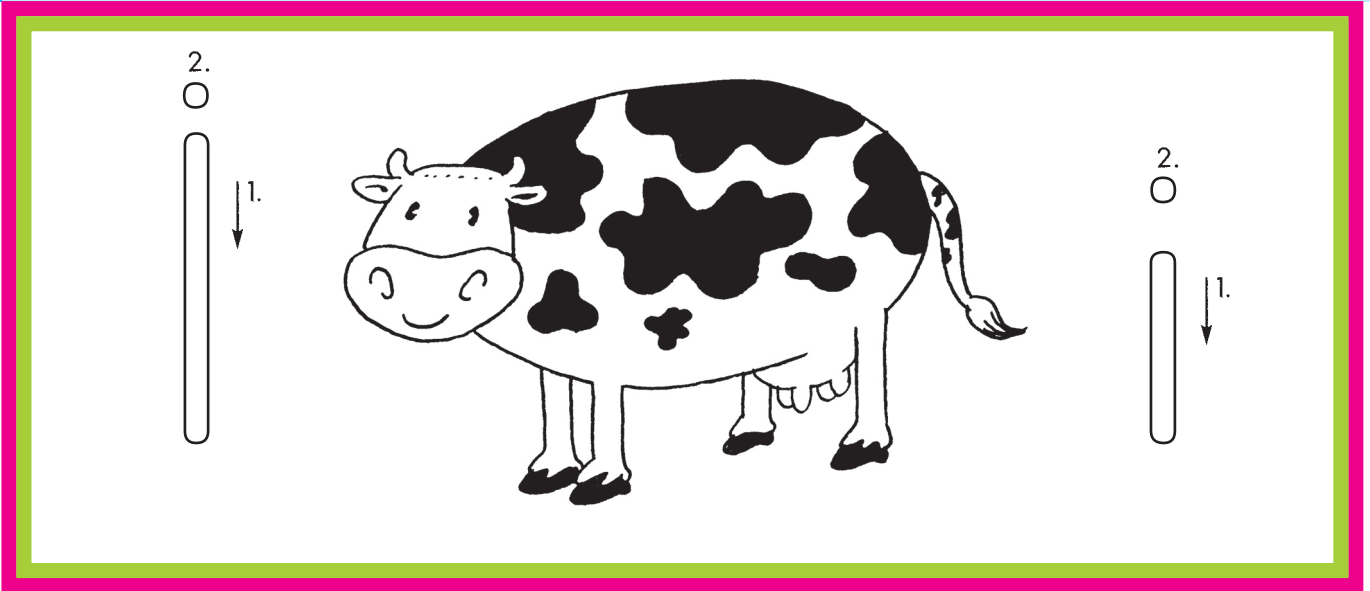




A a

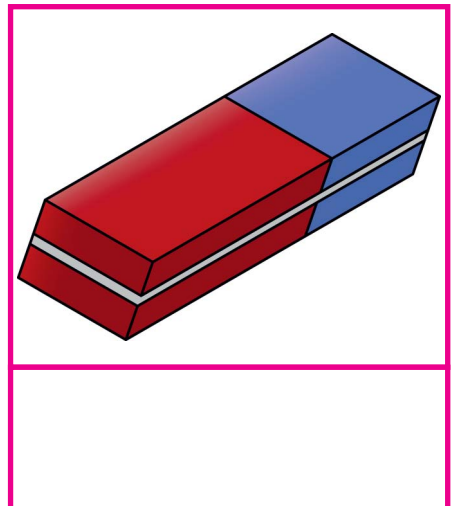
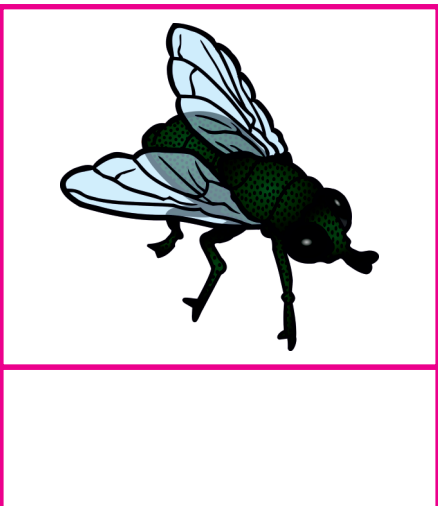
A	V	o	a	c	A	V
d	a	V	A	H	a	g
V	A	g	a	d	N	A
a	c	H	M	A	I	E





Ami*

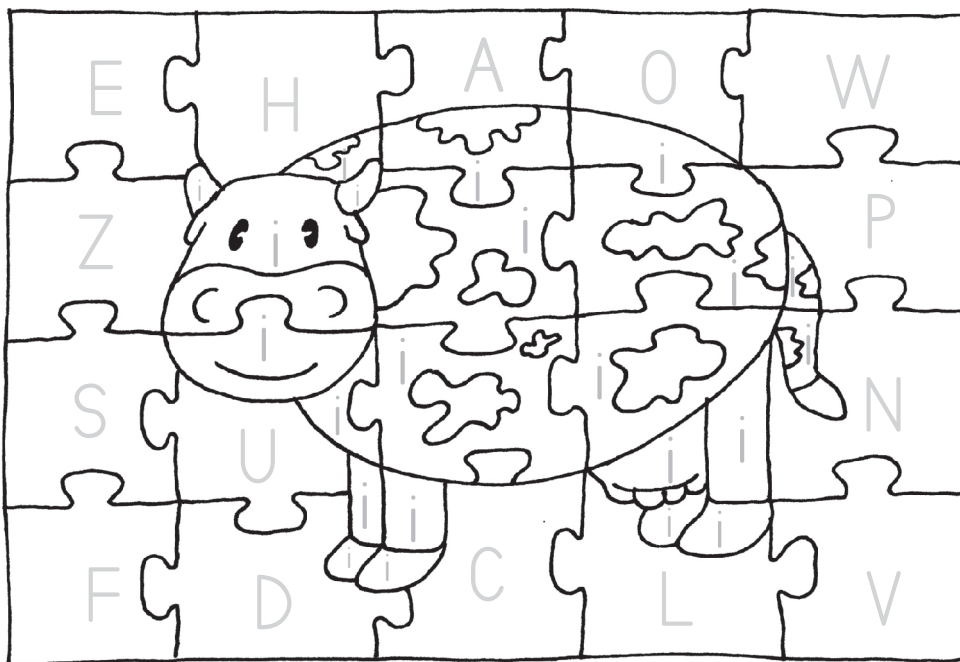
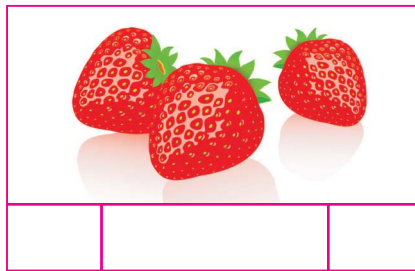
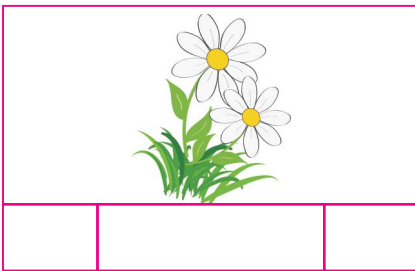
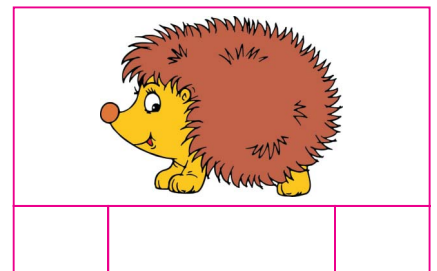
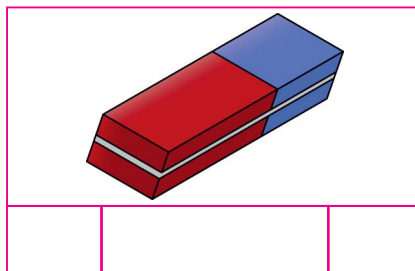
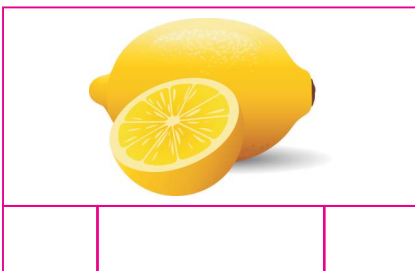
Mimi*

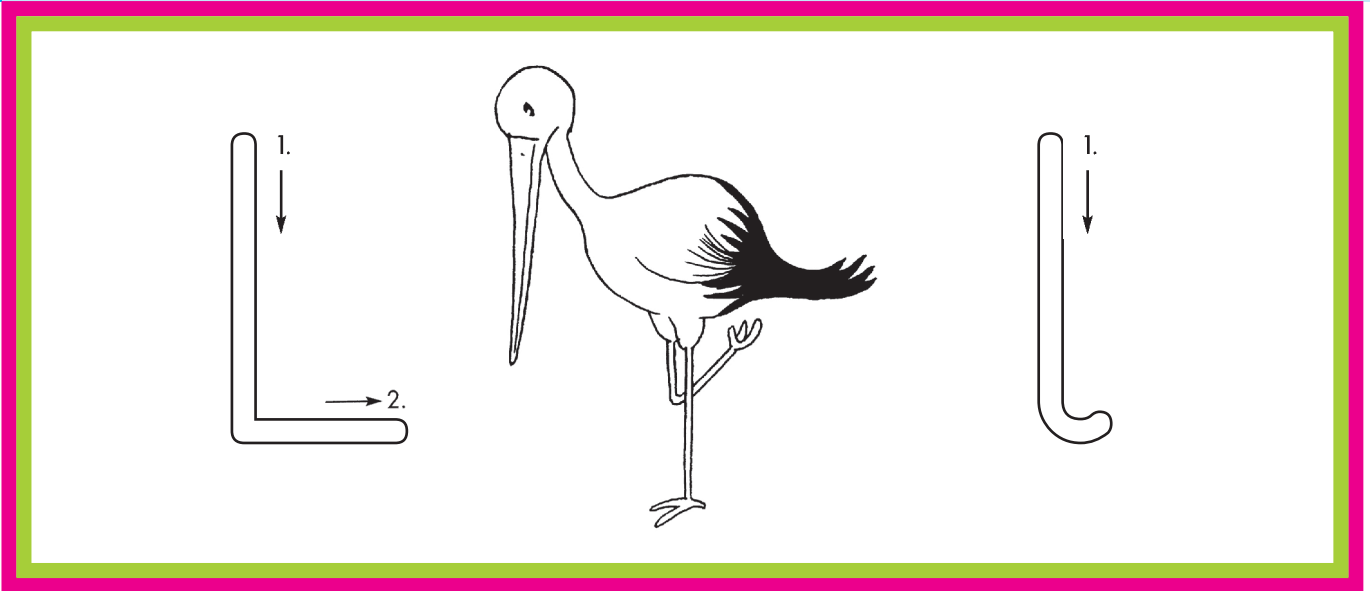




i i

M	i	o	a	i	l	S
i	a	i	r	O	i	m
L	i	l	a	i	N	A
i	c	H	M	i	l	E





L L L L L L L L L L

Ali*

al*

alma*

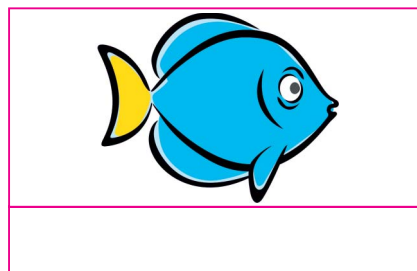
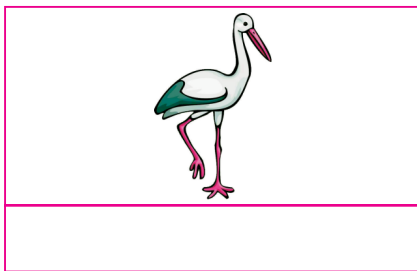
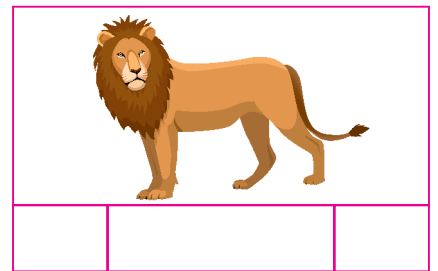
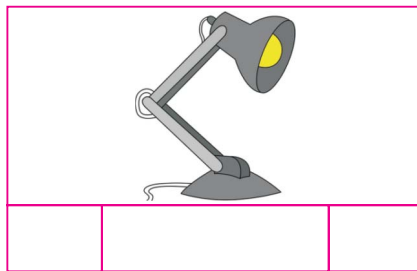
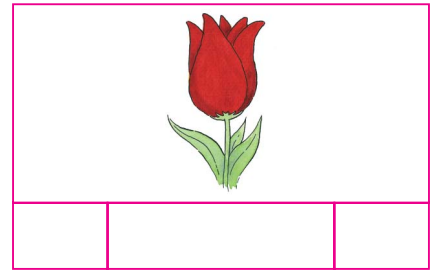
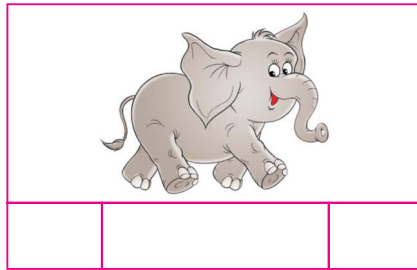
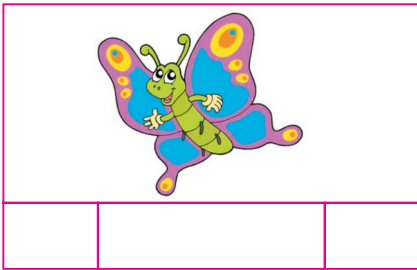
Ali al.*

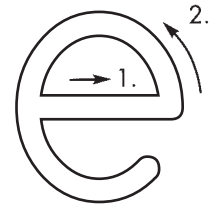
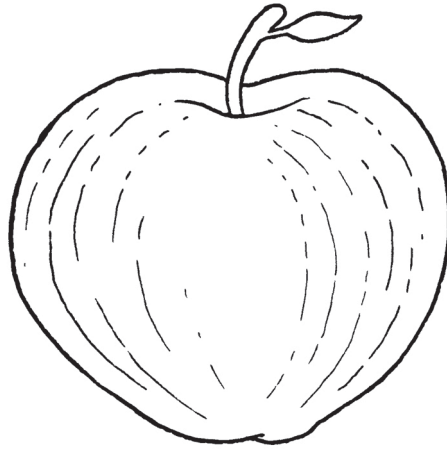
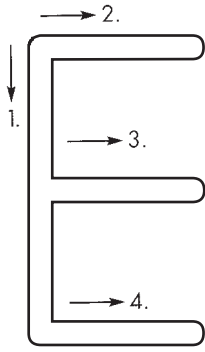
Ali alma.*



L l

A collection of letters 'L' and 'l' in various orientations and sizes. One uppercase 'L' is circled in red, and one lowercase 'l' is circled in blue. Other letters include 'm', 'i', 'a', and 'M'.





E e E e E e

el *

elma *

Ela *

Emel *

Lale *



E e

L m E i e i e E i
 m l i e e E i e i e E i
 m A i e i a i e i L i L L m
 E i e a E i e E l e i E l
 M i m

